

## MaxLite® 5 Button Wall Switch / Bluetooth Network Controls

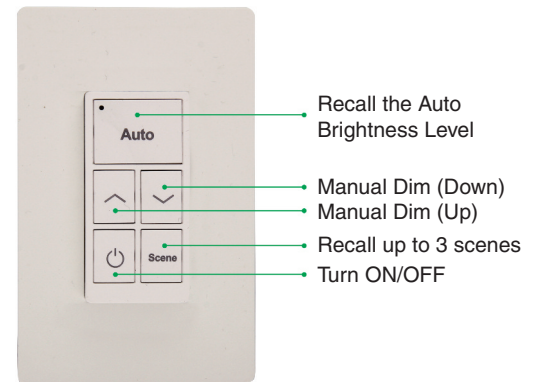
General Safety Information

- To reduce the risk of death, personal injury or property damage from fire, electric shock, falling parts, cuts/abrasions, and other hazards read all warnings and instructions included with and on the fixture box and all fixture labels.
- Before installing, servicing, or performing routine maintenance upon this equipment, follow these general precautions.
- Commercial installation, service and maintenance of luminaires should be performed by a qualified licensed electrician.
- **DO NOT INSTALL DAMAGED PRODUCT!**

**Models:** WNS5-W

**Included in the box:**

- A:** 5-button controller with back and front cover plate  
**B:** CR2032 batteries (2pcs)  
**C:** M3.5 19mm Flat head screws with anchors for mounting (2pcs)  
**D:** Mounting plate for junction box (for Junction Box mount only)  
**E:** #6-32 5/8" Machine screws for junction box mounting (2pcs)

Wall Mount Instructions

1. Remove the 5-button controller from the cover plate by gently pulling it from the top and sliding it up through the slots. **(Figure 1)**
2. Use the slot at the bottom of the 5-button controller to pry open and locate the battery terminals within the enclosure. **(Figure 2)**
3. Insert the 2 CR2032 batteries in the respective terminals. Ensure that the batteries are secured in the contact holders and the positive side of the battery is facing upwards as shown. **(Figure 3)**
4. Re-attach the 5-button controller enclosure in place. **(Figure 4)**
5. Pry open the bottom of the cover plate assembly to detach the front cover plate from the back cover plate. **(Figure 5)**
6. Use the screws **(C)** provided or double-sided adhesive tape (not included, sold by others) to mount the back plate on to the wall.
7. Re-attach the front cover plate with the back plate and slide the 5-button controller into the cover plate assembly. Note that the switch controller cannot be attached before assembling the cover plates. **(Figure 6)**

**Note:** Blue light indicator suggests batteries are in good condition. Flashing Red light indicator suggests battery running low. Replace with 2x CR2032 batteries with the correct polarity to avoid product damage.

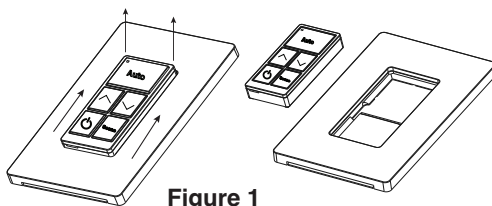


Figure 1

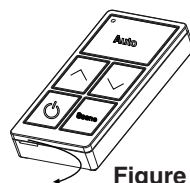


Figure 2

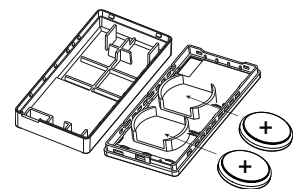


Figure 3

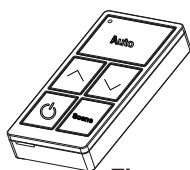


Figure 4

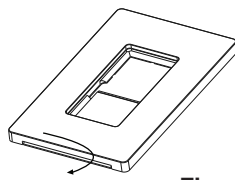


Figure 5

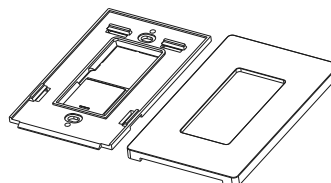
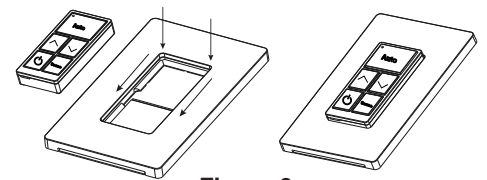


Figure 6



# MaxLite® 5 Button Wall Switch / Bluetooth Network Controls



## Junction Box Mount Instructions

1. Follow Step 1 through 4 of the wall mount instructions.
2. Use the screws (E) to mount the mounting plate for junction box.
3. Slide the 5-button controller into the cover plate. **(Figure 1)**
4. Attach a standard Decora Face plate (not included.)

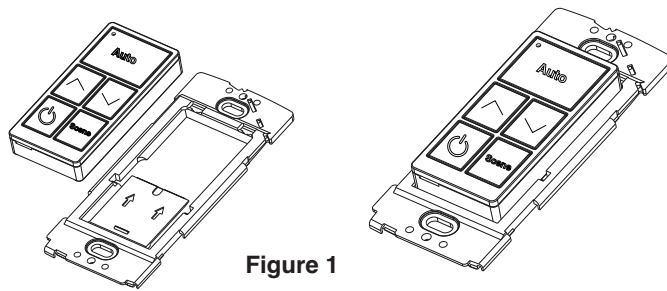


Figure 1

## Commissioning with c-Max App

Refer to the c-Max Commissioning Guide on [www.maxlite.com/cmax](http://www.maxlite.com/cmax)

## Warranty

MaxLite offers a 5 year warranty on this product, please see: <http://www.maxlite.com/resources/warranties> for more information.